



HEAD OFFICE – **SCC** - **Select Containers Co SA**

93, Rue de Lyon – 1203 GENEVE – Switzerland

Phone: + 41.22.339.30.56 – Fax: + 41.22.339.30.41

Email: willy.binst@netplus.ch

Web site: www.select-containers.com

S.C.C. SA

Since 1981

ABOUT US



Year 1981



Year 2001

S.C.C. SA – Six-in-one Containers Co SA became in 2001 S.C.C. SA – Select Containers Co SA - still “SCC” but with a new logo as above.

1981 - The Company was first established with Head Office in Geneva Switzerland to promote the patented Six-in-one container.

1991 – The company was bought over by Mr. Willy Binst (100% shareholder) who started to diversify its main activities.

2001 - the change of the name was to better match the company’s new activities.

Thus, in 2020, S.C.C. SA is celebrating its 39th anniversary and we are proud to celebrate our 29th anniversary of ongoing success and excellent reputation on the worldwide market under the leadership of its owner Mr. Willy BINST

WE ARE THE EXPERTS IN THE MARINE CONTAINER INDUSTRY

UPDATED ACTIVITIES OF OUR COMPANY

SCC – Select Containers Co SA has basically THREE different business activities :

1. - BUILDING NEW CONTAINERS
2. - ONE WAY LEASE Inc.
3. - SPECIAL PRODUCTS & PROJECTS

1/ BUILDING NEW CONTAINERS

(Supply – Contracting – Financing)

SCC SA is the Sales Agent and partner for various marine container manufacturers in China. We produce any type of **standard** equipment or any type of **special** containers as per the customer's technical requirements.

The containers can be delivered ex-works or to any ports in China (North, Central, South) as well as on a one way free lease basis, or even empty e.g. for specials, to any ports in Europe, USA, Africa, South America or any other Continents with no minimum order quantity / volume requested.

Furthermore, financing over 5, 7 or 10 years, based on a Full Pay-out Purchase Lease plan can be provided subject to final Credit approval.

**OVER THE YEARS SINCE 1981 SCC SA HAS SOLD SUCCESSFULLY
HUNDREDS OF THOUSANDS OF CONTAINERS !**



List of MAIN manufacturers in China as follows:

- CXIC
- SINGAMAS
- TYC / RYC
- JS CONTAINERS
- DFIC
- DWCM

2/ ONE WAY LEASE Inc.

(One Way – Rental – Trading)



SCC SA is a 25 % shareholder and main finance partner of this unique Leasing Company that offers containers on a ONE WAY basis against a very attractive lump sum fee. If you are interested in such service, please advise type of containers, pick up and drop off locations as well as the number of free days that you would need. Upon receipt of this data, we shall send you our best proposal.

OWL Inc. is also supplier of USED 2nd HAND and NEW containers to the DOMESTIC leasing Industry.



You are welcome to visit the Website of OWL Inc. at:
www.onewaylease.com

3/ SPECIAL PRODUCTS & PROJECTS

(Owner's representative)

- E.G. : Racks or Flatracks

for transporting Cars

We work with a number of suppliers of car-racks for the transportation of automobiles in marine containers or flatracks that can accommodate many types of vehicles to be studied carefully case by case.



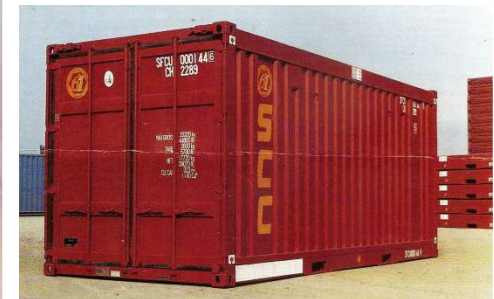
- E.G. : Housing containers

We are supplying a number of different types of Housing Containers for building sites of temporary schools or offices, etc. fully equipped to customers' requirements including sanitary unit, infirmary and generator container with solar panels. We deal with all types of enquiries of reasonable sizes and volumes.



- E.G. : Six-in-one Container

The unique fully dismantlable Six-In-One (SIO) container has been designed to operate on imbalance trades using 20ft containers. The SIO 20ft ISO dry freight container can be dismantled in 15mn, stacked and interlocked together into a module of 6 units thus reducing empty return costs i.e. six SIO containers can be handled in the time and for the cost of one 20ft container. A 40ft design can be developed based on the same technology depending on demand.



CUSTOMERS' REFERENCES

For your reference, our main and regular customers up to now have been as follows :

- MSC – Mediterranean Shipping Co SA – Geneva
- DELMAS Container Line – Le Havre
- GOLD Container Corp / TOUAX – Paris
- CATU Container SA – Geneva
- RCL – Regional Container Line –Singapore
- Union Shipping – Auckland
- Anglian Shipping – London
- Hamburg Süd / Colombus Line – Hamburg
- Containental Ltd – London
- CTX Containex – Vienna
- Scantec – Copenhagen
- MESSINA Line – Genova
- Hispania Line – Barcelona
- CMA-CGM – Marseille
- ACL –Atlantic Container Line – New Jersey
- JJ Shipping – Shanghai
- OWL Inc. – Oakland
- Container Leasing AS – Copenhagen
- Gearbulk Container Services - Seattle
- Southern Star (for BMW cars) - Johannesburg
- BOEING aircraft – Seattle
- COLAS – Paris
- etc.

+ a number of smaller companies or individual buyers in the world.

FOR FURTHER INFORMATION PLEASE CONTACT:

HEAD OFFICE – SCC - Select Containers Co SA

93, Rue de Lyon – 1203 GENEVE – Switzerland

Phone: + 41.22.339.30.56 – Fax: + 41.22.339.30.41

Mobile ph.: +41.76.469.17.28 or +33.609.54.62.83

Email: willy.binst@netplus.ch

Web site: www.select-containers.com

